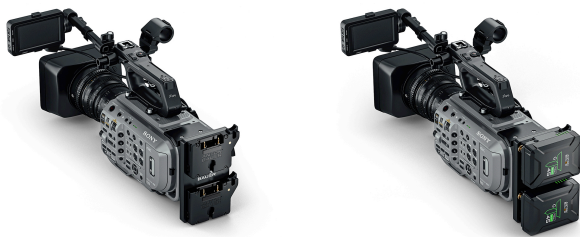




## Dual Micro Bracket for Sony PXW-FX9 (Gold-Mount)

**SKU:** 8375-0243

Power a Sony PXW-FX9 camera for hours with the Anton/Bauer Dual Micro Gold-Mount Battery Bracket for Micro Series batteries.



## PRODUCT DESCRIPTION

Power a Sony PXW-FX9 camera for hours with the Anton/Bauer Dual Micro Gold-Mount Battery Bracket for Micro Series batteries.

The custom-designed aluminum mount attaches seamlessly into the Extension Unit Connector on the top of the camera providing a secure platform to mount (2) Micro Gold Mount batteries directly to the camera with a streamlined profile that fits perfectly into a camera case for compact packing.

The Dual Micro Battery bracket steps up the output to the required 19.5V DC, delivered to the camera via the DC-In port. The unique quick-hinge design retains access to the camera's internal BPU battery compartment allowing continuous shooting by hot-swapping internal and external batteries.

Four integrated P-Tap ports deliver power to run additional accessories. A digital fuse monitors the current to provide protection to the camera and external devices.

- Dual Micro Gold-Mounts
- Steps up the output to the required 19.5V DC
- 4 x Integrated P-Tap power outlets
- Unique quick-hinge design
- Aluminum mount attaches into the Extension Unit Connector on the top of the camera
- Steps up the output to the required 19.5V DC

# TECHNICAL SPECIFICATIONS

Camera Model	FX9
Camera Brand	Sony
Height	76.2 mm   3 in
Width	17.78 cm   7 in
Depth	44.4 mm   1.75 in
Weight	0.349 kg   0.77 lb
Mount Type	Gold Mount
Power Tap	3
Compatibility	Specialized

# IN THE BOX

Sony PXW-FX9 Dual Micro Gold-Mount Bracket