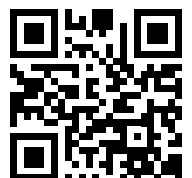


26V Charger

Battery Charger Firmware Upgrade



8475-0138 26VLP4, 4 Position Gold Mount Plus Charger
Dual Voltage (26V and 14V), multi-chemistry quad charger - Gold Mount Plus
8475-0148 26VLP4, 4 Position B-Mount Charger
Dual Voltage (26V and 14V), multi-chemistry quad charger - B-Mount

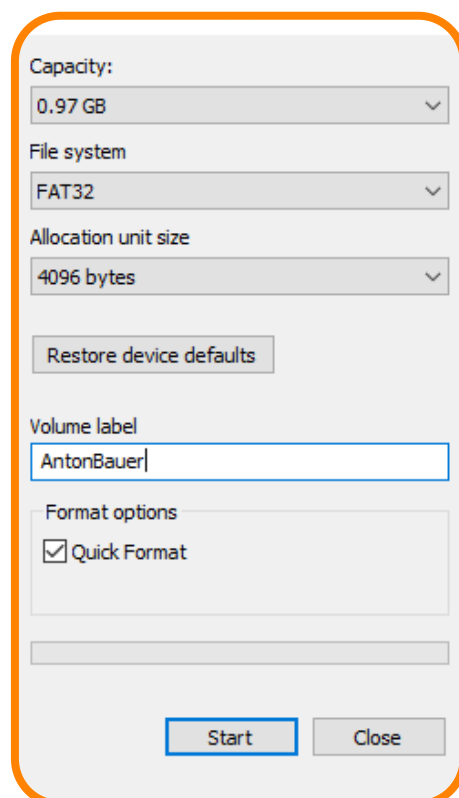
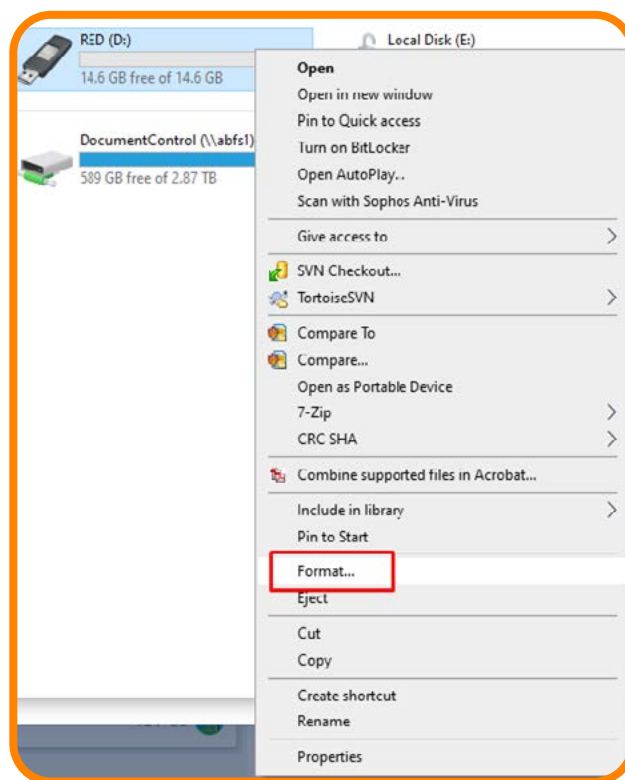


How To Update Batteries Using a 26V Charger	3
Setup	3
Obtain and Prepare the Update File.	5
Update Procedure... ..	6
LED Indications	7
Procedure	8
Update Battery Firmware with 26V Charger.	8

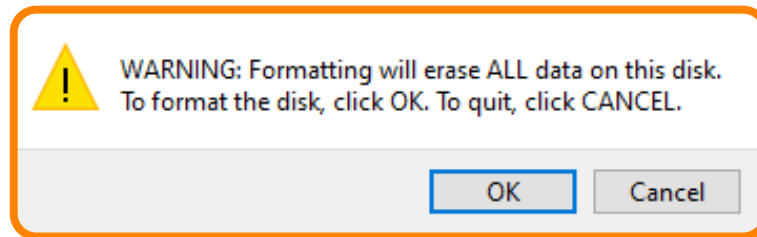
Prepare flash Drive

Setup

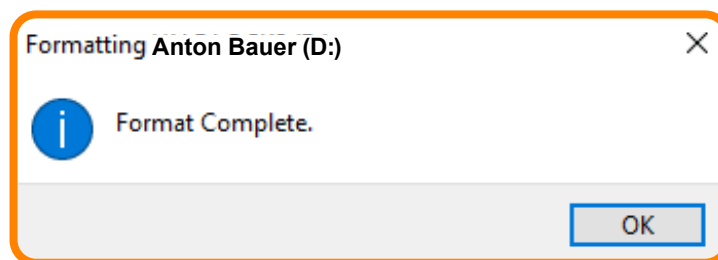
1. To prepare a flash drive.
2. First format the flash drive to FAT32 File system.
 - a. Insert the flash drive into a USB port on the computer.
 - b. Right click the flash drive icon.
 - c. Select "Format..."
 - d. Select "FAT32" for the File system type.
 - It may say FAT32 (default), depending upon the PC settings
 - Volume label can be any text, we recommend "Anton Bauer".
 - e. Click "Start".



- f. You may receive warning – click “OK”.



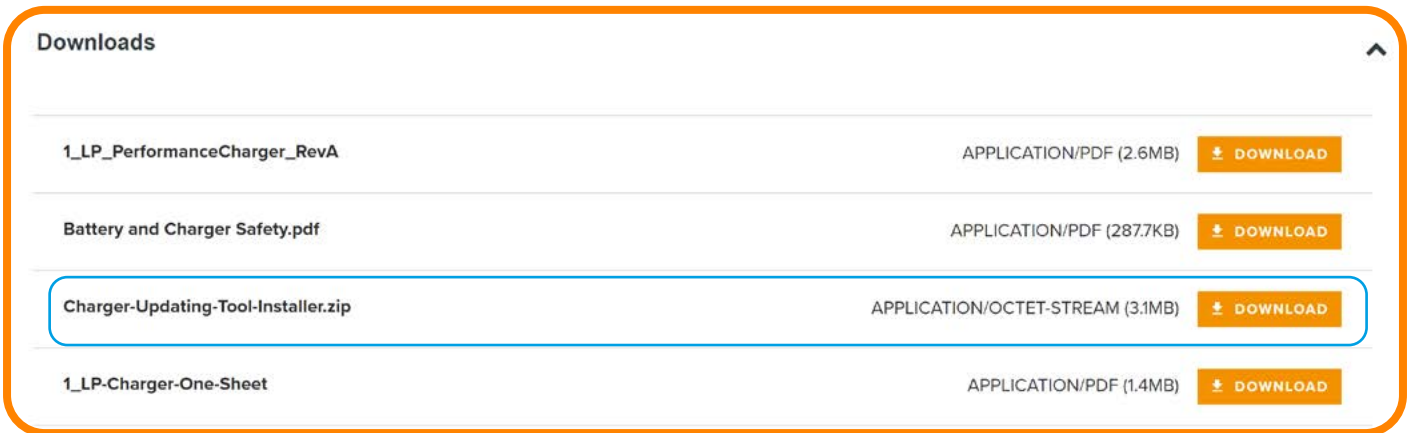
- g. When formatting the drive is complete, click “OK” on the pop-up.



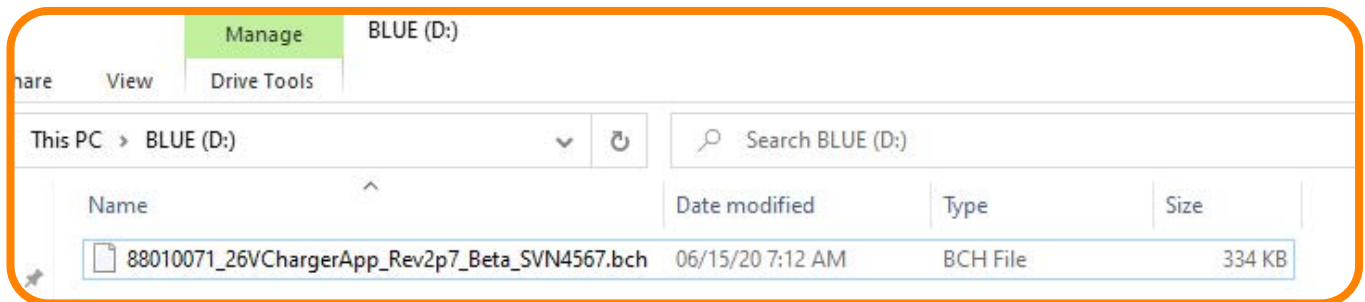
Obtain and Prepare the Update File

To obtain the update file, visit www.antonBauer.com.

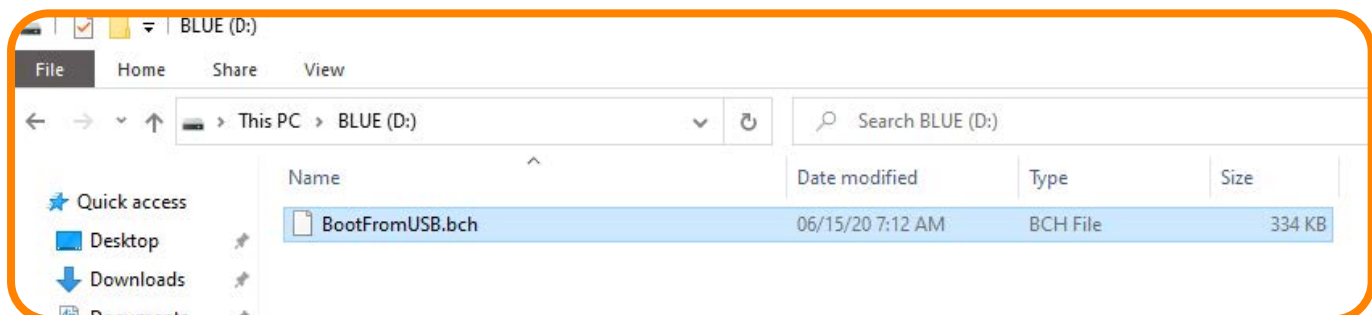
1. Navigate the web site to find your product.
2. Scroll down the page to find the download section.



3. Click "Download" to begin the download of the update file(s) .bch format.
4. Navigate to the downloads folder on your computer and find the downloaded files.
5. Copy and paste the file(s) to the root directory of the flash drive as shown in the image below.



6. Right click on the file in the flash drive and select "rename".
7. Rename the file to **BootFromUSB.bch**



Safely remove the flash drive from your computer by right clicking on the device and select "Eject" or any approved method to remove the drive safely.

Update Procedure

1. Power down the 26V charger.
2. Press and Hold the "Wifi Reset" button on the back of the charger using a paper clip.
 - a. It's accessible through the tiny opening.
 - b. Insert open end of paper clip.
 - c. You'll be able to feel a button push.



3. While holding the button depressed, connect the AC line chord to power up the charger.
Note! The charger will be forced into boot loader mode. Boot loader mode is indicated by 1 Green LED blinking.



4. Once the unit starts, release the button and remove the paperclip. When successful, a RED LED will light in the reset button.



5. Plug the flash drive from the Setup section into the USB port located on the rear of the 26V Charger.
 - The charger will read and verify the update file and update the charger.

LED Indications:

- Reading USB Device – Bay 1 Green LED ON.
 - Erasing – Bay 1 LED ON, toggle LED D5.
 - Writing – Bay 1 Green and Red LEDs ON, toggle LED D5.
 - Done – Bay 1 Green, Red and D5 LEDs are turned ON. The LEDs are then turned OFF in sequence: D5 -> Bay 1 Red -> Bay 1 Green.
5. Completely power down the charger by removing the AC line cord.
 6. Remove the USB.
 - It will not harm the device or cause any problems if the Flash Drive remains connected when power is reapplied.
 - It is recommended to remove the Flash Drive to avoid damage when not in use.
 7. When you re-power the charger, the indicator light by the reset button will flash Orange.

Procedure

1. Power up the 26V charger.
2. Plug the flash drive into the USB port located on the rear of the 26V Charger.
 - It's OK to power up the charger with the Flash Drive installed.
3. Connect the battery or batteries to be updated to the charger.
 - The charger will evaluate the battery, alternating led and green LED.
4. As needed the charger will charge the battery to a minimum level.
5. When the update criteria is satisfied, the battery/batteries will be updated.
 - Most batteries will update with very small % of charge.
 - The charger updates one channel at a time (automatically going to the next).
 - Update time is usually less than one minute.
6. When the battery is updating, the charger LEDs alternate flashing, similar to when the battery is Evaluating.
DO NOT remove a battery while LEDs are alternating.
7. When the update is complete, the battery will continue the normal charge cycle.
 - It is safe to remove a battery at this time if desired.

We recommend removing the Flash Drive when not actively updating to prevent damage to the USB socket from unintended impacts to the Flash drive.

